

# Payroll Clerk Candidate Pack

We want a world that is Disability Positive



Charity No: 1091744  
Company No: 4050994

disability  
**positive**

# Contents

Introduction	3
Who are we?	4
Our Services: For Adults	5
Our Services: For Children and Young People	6
Our Services: For Everyone	7
Organisation Structure	8
Future Plans	9
Benefits & Purpose	10
Scope	11
Key Tasks	12
Person Specification	13
Recruitment Process	15
Contact us	16



# Introduction

Dear Candidate,

Thank you for your interest in Disability Positive, a charity that has dedicated itself to the lives of people with lived experience of disability and long-term conditions, and their families across Cheshire and surrounding areas since 1992.

We pride ourselves on being a great place to work and progress, and we employ an amazing workforce of over 75 people. We have experienced substantial growth since inception and our services have successfully increased to the point that we are well recognised as a trusted, influential, and supportive organisation; providing services, opportunities, and voice to over 10,000 people with lived experience of disability and long-term conditions per year.

We know it matters, as we live with disability and long-term conditions too.

We hope that you are the kind of person we are looking for, someone; organised, driven and professional to work within our payroll team. If you are interested in the role, please return your completed application to [hr@disabilitypositive.org](mailto:hr@disabilitypositive.org)

We'd love to hear from you.

**Lynne Turnbull**  
Chief Executive Officer



# Who are we?

## We are Disability Positive.

We are a charity based in Cheshire and work mostly in the North West. We love working with others who think like us.

We provide services, opportunities and a voice to people living with disability and long-term health conditions and their families.

We have services to help people with everyday life, being part of their local community and looking after their own wellbeing.

We can offer advice, help with practical tasks and advocate for people in lots of different situations.

We listen and share people's experiences to influence positive change in government policy.

We know it matters, because we live with disability and long-term health conditions too.

## Our Values

- **Positive:** It's not just our name, it's how we approach every challenge and opportunity.
- **Collaborative:** We don't believe we can do everything ourselves; we love working with others who think like us.
- **Representative:** We are here to be the voice of people living with disability and long-term health conditions.
- **Ambitious:** We are not going to change the world without thinking big.
- **Trustworthy:** We need to be a place where people feel safe and can come freely for honest and impartial advice and support.

The social model of disability is the starting point for everything we do and is the idea that people are not disabled by their condition, but by a world that doesn't meet their needs.



# Our Services: For Adults

## **Arrangement of Care and Support Service**

Support with making sure people's care works for their needs.

## **Advocacy**

Supporting people to say what matters to them and upholding their rights.

## **Good Company**

A fully accessible social group for adults, meeting regularly with the opportunity for day trips too.

## **Payroll**

Supporting people who employ Personal Assistants with payroll management.

## **Supported Banking**

Getting support with banking and auditing for direct payment recipients.

## **Learning Service**

Access to learning and development opportunities for people who employ Personal Assistants, and their Personal Assistants.

## **Telephone Information Advice Line**

Supporting people to access the information they need provided by us or others.





# Our Services: For Children and Young People

## **Advocacy**

Supporting people to say what matters to them and upholding their rights.

## **Arrangement of Care and Support Service**

Support with making sure people's care works for their needs.

## **Community Connections**

For parents or carers of a child or young person aged 0-18, living in the Cheshire West and Chester area, who need a short break from their caring responsibilities.

## **Sensory Hive**

Sensory based after school club for young people ages 5-11.

## **Youth Groups**

A range of accessible activity groups supporting those aged 5-18 years to try new things and meet new friends.



# Our Services: For Everyone

## Volunteer Opportunities

We couldn't be without our team of dedicated and enthusiastic volunteers. People can volunteer their time across a range of services, or join us for a work placement, to gain new skills and contribute to our work.

## Membership

We need our members to share their views so that we can continue to develop our services, and be a strong voice to influence local, regional and national government policy.

We welcome anyone with lived experience of disability or a long-term condition or with caring responsibilities.

## Policy Influencing

Policy influencing is what we do to influence positive change with local, regional and national government. We want to be a voice for our members and people with experience of disability and long-term conditions and use their views and experiences to influence the kind of changes we want to see.

## Disability Equality Training

Support to better understand disability, reducing barriers and changing attitudes.



# Organisational Structure

We are a registered charity and company limited by guarantee.

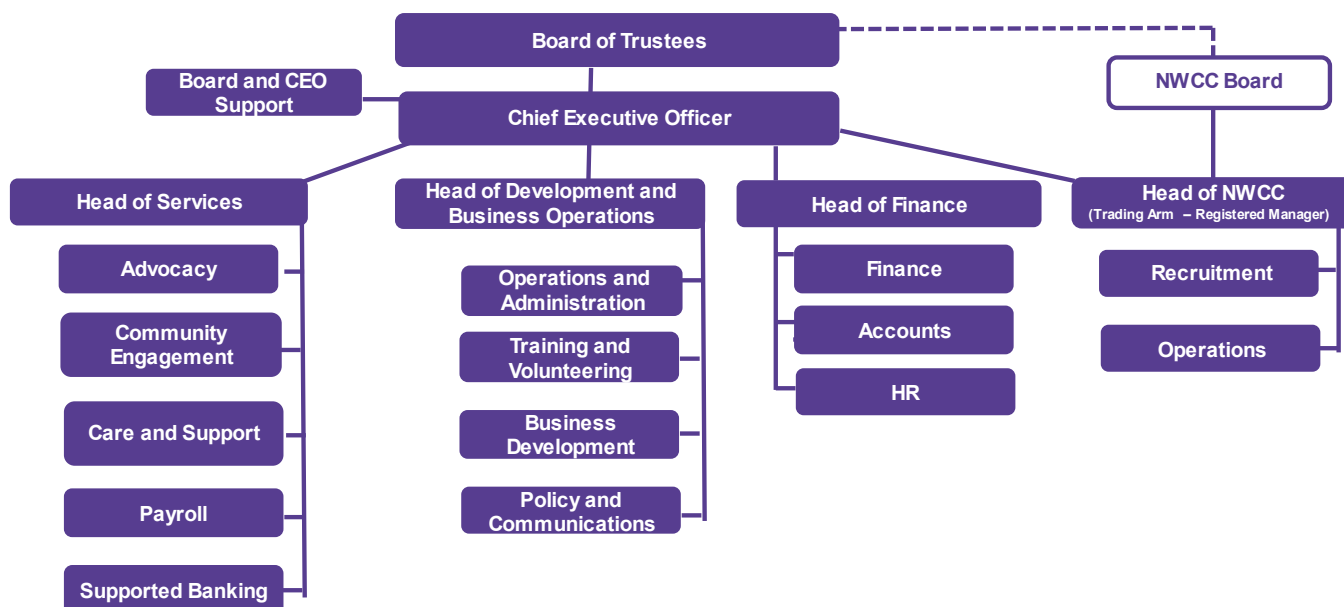
We are governed by 11 trustees who are known as our Board of Trustees. The Board of Trustees are both Directors of the company for the purposes of the Companies Act 2006 and Charity trustees for the purposes of the Charities Act 2006.

The Board of Trustees are responsible for the governance of Disability Positive. Our Board of Trustees have lived experience of disability and long-term conditions and bring a mix of skills that are essential to good governance, ensuring that our activities are conducted in line with our charitable objects, as detailed within our Articles of Association. In addition, we have over 240 members of the charity who all have lived experience of disability and long-term conditions.

Day-to-day management is delegated to the Chief Executive Officer and Senior Staff through a Scheme of Delegation of Board Authority.

We currently employ 51 FTE staff (65 people), with additional support across our services through volunteers. 74% of our workforce also have lived experience of disability and long-term conditions.

## Our Organisation Chart





# Future Plans

We have finalised our new Strategy 2020 - 2030, with a focus on three strategic themes:

- Positive about offering services that suit the needs of people with lived experience of disability or long-term health conditions.
- Positive about providing the opportunity for people with lived experience of disability or long-term conditions to be part of community life.
- Positive about giving a voice to people with lived experience of disability or long-term health conditions.

We are in a strong financial position, with a robust balance sheet and reserves policy which has supported and should continue to support expansion of our services.

A major part of our income comes from delivering services under contract with a number of Local Authorities and Clinical Commissioning Groups in Cheshire East, Cheshire West and parts of the Northwest. We also provide a number of services that individuals purchase directly from us.



# Benefits & Purpose

<b>Job Title:</b>	Payroll Clerk
<b>Grade:</b>	5
<b>Salary:</b>	Starting at £21,257 per annum, rising to £22,320 per annum post probationary period.
<b>Hours:</b>	Full Time (35 Hours per week)
<b>Holiday Entitlement:</b>	25 days per year + Bank Holidays and 3 gifted days between Christmas and New Year Shutdown.
<b>Other Benefits:</b>	An additional two days gifted leave for your Birthday each year, Company Pension, Private Health Care (with medical history disregard) upon completion of probationary period.
<b>Direct Reports:</b>	N/A
<b>Reporting to:</b>	Payroll Manager

## Purpose

As part of our payroll team, you will be assisting in the delivery of our service specifically to our Bolton Council contract to approximately 700 clients who have become employers of their own Personal Assistants.

You will be processing pay runs, submitting HMRC returns and assisting with general queries relating to employing assistants through a carer's scheme.

Working with our clients couldn't be more rewarding. You will be able to get to know their needs and build a close and positive working relationship. No two days are ever the same and using your initiative and great people skills will give you the opportunity to make a real difference

# Scope

## Business Skills

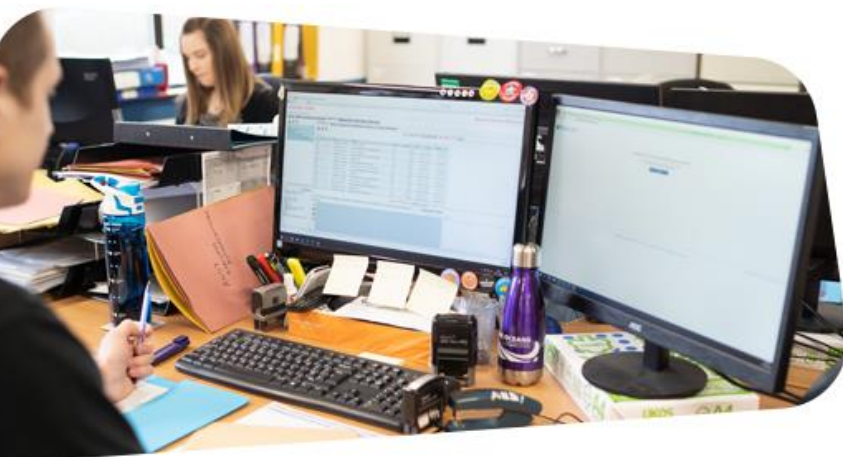
- Demonstrates an analytical and methodical approach to problem solving.
- Absorbs and applies technical information.
- Has a thorough understanding of their job and how own role relates to other roles and to the business of the employer.

## Complexity

- Has defined areas of responsibility.
- May provide guidance or support to clients or other members of staff.
- May be responsible for a targeted caseload within a department.
- May have input into a defined part of a project, small internal business project or a new process.
- Performs a targeted range of work, often routine in nature.

## Autonomy

- Accountable for delivering assigned tasks within broader projects or functions.
- Operate as a competent professional with minimal supervision.
- Limited decision-making scope on how tasks are to be fulfilled.
- Can easily determine when work should be escalated to a higher level.



# Key Tasks

## Governance

- Ensure all statutory requirements are met and not compromised.
- To liaise with H M Revenue and Customs regarding PAYE, National Insurance and Statutory Payments.
- Ensuring all paperwork is correctly authorised and in line with our policies.
- To adhere to our confidentiality and data protection policy.

## Communication & Relationships

- To liaise simply and clearly with disabled people regarding their payroll enquiries/queries.
- Ensure effective relationships are established and maintained with Management and other staff members.
- Build an effective working relationship with the Payroll Manager.
- Uphold the company values.

## Other Key Tasks

- Be involved with other ad-hoc duties and responsibilities as specified by the Payroll Manager.
- To provide cover for payroll team members during absence and holiday.
- Any other duties that may arise from this post.



# Person Specification

Criteria	Essential	Desirable	Assessed by
<b>Qualifications Experience</b>	<ul style="list-style-type: none"> <li>• Experience of working in a busy office environment</li> <li>• Experience of using database systems</li> <li>• Qualification in Maths and English GCSE or equivalent</li> </ul>	<ul style="list-style-type: none"> <li>• Experience of working with disabled people</li> <li>• Experience of working within a busy payroll department.</li> </ul>	Application and Interview.
<b>Knowledge</b>	<ul style="list-style-type: none"> <li>• Knowledge of Microsoft Office</li> <li>• IT literate.</li> </ul>	<ul style="list-style-type: none"> <li>• An understanding of Pay as you Earn (PAYE), National Insurance and Statutory Payment regulations,</li> <li>• Knowledge of SAGE Payroll Software</li> <li>• Knowledge of filing electronically end of year returns to the HMRC within specified deadlines.</li> </ul>	Application and Interview.
<b>Skills/Abilities</b>	<ul style="list-style-type: none"> <li>• The ability to listen and communicate to an acceptable standard both verbally and in writing</li> <li>• Ability to work as part of a team and on own initiative.</li> <li>• Ability to accurately record factual case notes and data input</li> <li>• Willingness to learn and take instruction</li> <li>• Confident telephone manner</li> <li>• The ability to work under pressure and to meet deadlines</li> </ul>	<ul style="list-style-type: none"> <li>• To be adaptable within the workplace</li> </ul>	Application and Interview.
<b>Other</b>	<ul style="list-style-type: none"> <li>• An understanding of the Social Model of Disability</li> <li>• A commitment to equality and diversity.</li> </ul>	The ability and willingness to work outside office hours, if required.	Application and Interview and Pre-Offer Checks.



# Recruitment Process

## How to apply

The Company will accept the submission of a CV (preferred) or an application form.

By CV: Along with a current CV, the Company require candidates to submit supporting information via a detailed covering letter of no more than 3 sides of A4 to demonstrate your suitability for the role (e.g. how you meet the advertised essential criteria).

By application form: the Company require candidates to submit supporting information within the supporting information section of the application form (no more than 3 sides of A4) to demonstrate your suitability for the role (e.g. how you meet the advertised essential criteria). You can download an application via our website at [www.disabilitypositive.org](http://www.disabilitypositive.org)

If you are interested, please complete either of the above, and return by email to [HR@disabilitypositive.org](mailto:HR@disabilitypositive.org)

## Timetable

**Deadline for applications:** Sunday 1 October 2023 11:59pm

**Interviews:** TBC

## What we do with your data

In accordance with the Data Protection Act 1998, and the General Data Protection Regulations 2018, the information provided in your application will be used as part of the recruitment and selection process and may be disclosed to those who need to see it.

It will also form the basis of the confidential personnel record of successful applicants.

In the case of unsuccessful applicants, the application form will be destroyed after 6 months, in line with our [HR Privacy notice](#).

# Contact Us



**Address:** Sension House, Denton Drive, Northwich, Cheshire, CW9 7LU

**Telephone:** 01606 331 853

**Email:** [HR@disabilitypositive.org](mailto:HR@disabilitypositive.org)

**Website:** [www.disabilitypositive.org](http://www.disabilitypositive.org)

**Facebook:** [www.facebook.com/disabilitypositive/](http://www.facebook.com/disabilitypositive/)

**Twitter:** [www.twitter.com/dis\\_positive](http://www.twitter.com/dis_positive)

**Instagram:** [https://www.instagram.com/dis\\_positive/](https://www.instagram.com/dis_positive/)



Sension House, Denton Dr,  
Northwich CW9 7LU

01606 331853

[www.disabilitypositive.org](http://www.disabilitypositive.org)  
[info@disabilitypositive.org](mailto:info@disabilitypositive.org)



Charity No: 1091744 / Company No: 4050994

VAT No: 182762291

